

USER MANUAL

Suppressor Cover



Preamble

Thanks for choosing a product from Lambda Armament and that you trust in our products. We develop and produce products in highest quality to satisfy your needs.

We say thanks for your trust in „Made in Black Forest“ and wish you a lot of fun with your product.

Your team of
Lambda Armament



Contents

1.	General	3
1.1	Supressor Cover	3
1.2	Intended Use	4
2.	Safety instructions	6
3.	Mounting	7
4.	Before and after shooting	11
5.	During shooting	12
6.	Maintenance	13
7.	Cleaning	13
8.	Storage	14
9.	Disposal	14



1. General

1.1 Supressor Cover

The Lambda Armament supressor cover is intended as protection against burns by hot supressors when unintentionally contacting your gear or body parts. It also reduces and/or avoids mirage effect when using mechanical or optical weapon sights, signature against thermal imaging devices and damages due to rough handling.

The materials of the supressor cover are carefully choosen and are nearly all manufactured according MIL-STD or TTD (TL) of the German Bundeswehr.

The outer shell is made of abrasion resistant Cordura. The inner shell is made of high temperature resistant textile with special coating, and rated up to 1100°C. The inner shell is sewn with special



sewing thread which is high temperature resistant.

1.2 Intended Use

Because every suppressor has different measurements, please take care you are only using the correct suppressor cover for your suppressor. Suppressor covers which are not intended for your suppressor are not allowed.

Suppressor covers are not intended for long sustained fire (e.g. machine gun fire). It should be cooled down for further use. The exact amount of rounds you can fire with your suppressor cover can't be answered. It depends on several factors, especially barrel length, the caliber, the structure and the materials of the suppressor, the cycle of fire, but also the ammunition (especially tracer!). If need be you should carry out your own test regime.



It is not allowed to fix, stick or clamp any obstacles to the polyamid webbings and buckles. There is the risk from fire!
It is only allowed to use the supressor cover like characterized in chapter 1.1.

The product life is highly dependent from application and the intensity of use.

Only use complete undamaged supressor covers.

We are not liable for damages to supressors, weapons and/or weapon parts, or any other property or persons by unintended use.



2. Safety instructions



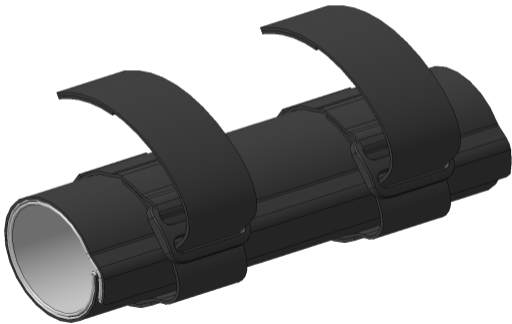
Smoke from the suppressor cover is a sign of overheating. Shooting must be stopped immediately and the suppressor and suppressor cover must cool down. There is the risk of burns! Afterwards the suppressor cover must be checked for damages.

After shooting the suppressor still mitigates heat for several minutes which transmits to the suppressor cover. Wait for at least 15 minutes before you touch the suppressor cover. We generally recommend to wear gloves, ear protection and eye protection when shooting firearms.



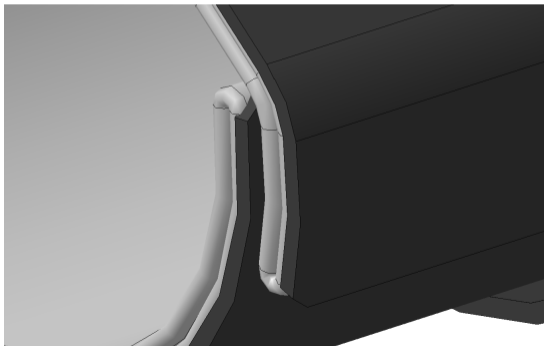
3. Mounting

- 1.) Wrap the supressor cover and pull the webbing through the respective buckle. This step can also be performed on the supressor.



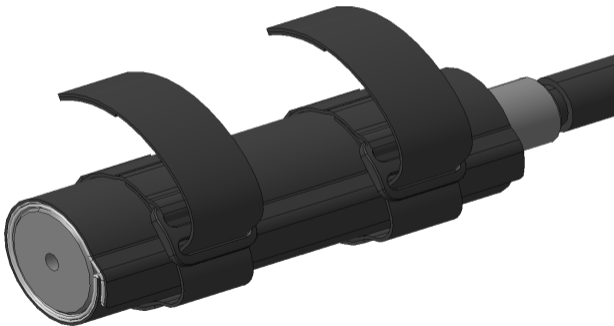


2.) Take care to have an appropriate overlap (ca. 1,5-3cm / approx. 0,6-1,2") of the inner shell. Only that way the heat protection can be optimal.



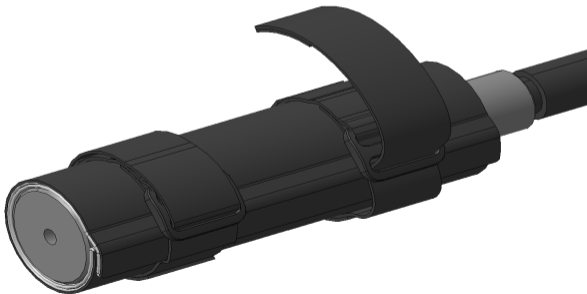


3.) Push the supressor cover over your supressor. The supressor cover must be concice to the supressor and the front and end.





4.) Lash down the supressor cover tightly with the webbings to your supressor and fix it with the integrated velcro. Check the supressor cover for a tight fit. In doubt repeat the mounting.





4. Before and after shooting

Before shooting check the supressor cover for damages. Should there be damages (e.g. cracks or holes), it is not allowed to use the supressor cover. Also check the supressor cover for a tight fit to the supressor (chapter 3.).

After shooting high temperature must be expected on the outer shell (see chapter 2).

When the supressor cover is cooled down, check for a tight fit again and if need be remount according chapter 3.



5. During shooting

When the supressor cover is moving or sliding during shooting, immediatly stop shooting and proceed according chapter 2 and 4 (Cooling time, Mounting, tight fit).



6. Maintenance

When used as intended (chapter 1.2) there is not maintenance needed. Dependent on the intensity of use there can accure signs of present on the outer shell. The inner shell can discolor when using at high temperatures. This is no defect or lack and is no reason for a warrenty case.

7. Cleaning

Course dirt can be remoced with a soft (shoe-)brush and water.



8. Storage

There are no special requirements to the storage of the supressor cover. The supressor cover should be stored dry, protected from uv radiation, and protected against lubricants.

9. Disposal

The product is made of materials which are harmless to the enviroment. A damaged or defect supressor cover can be disposed to the household waste.



Notizen



Notizen



Lambda Armament
Sulzer Straße 5
D-72175 Dornhan
www.lambda-armament.de